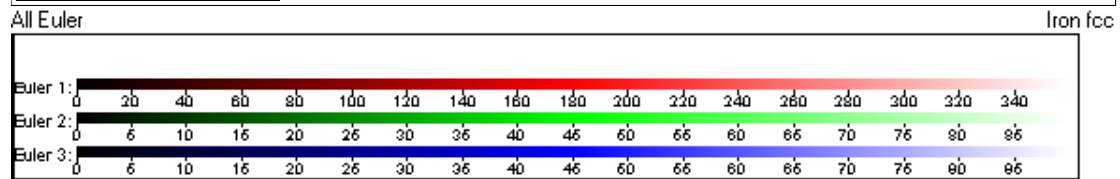
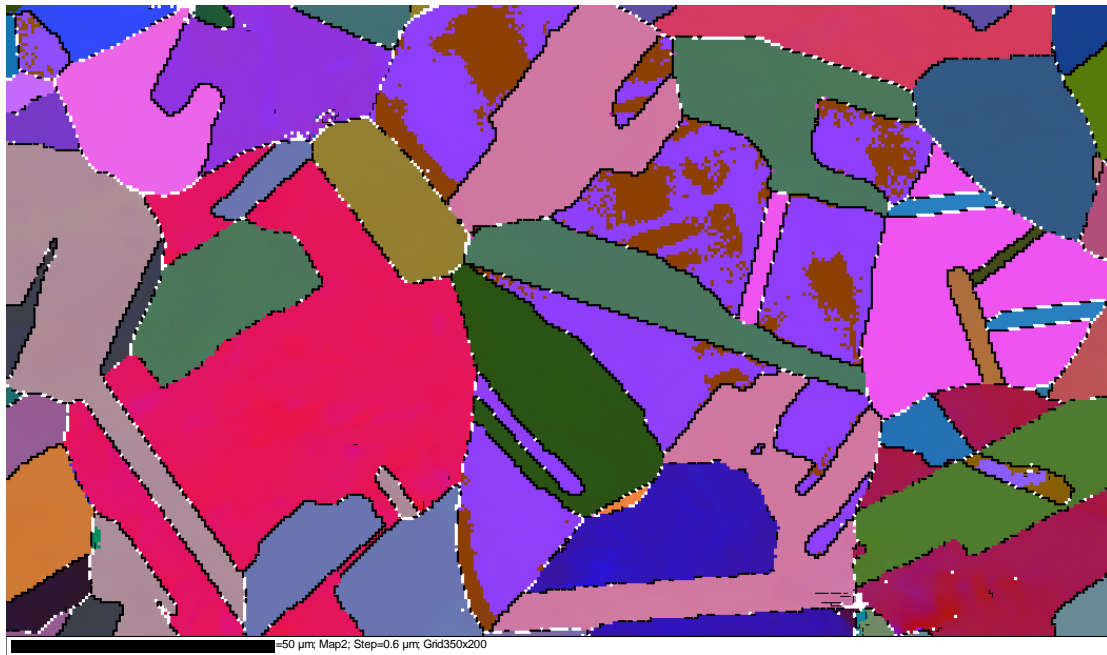
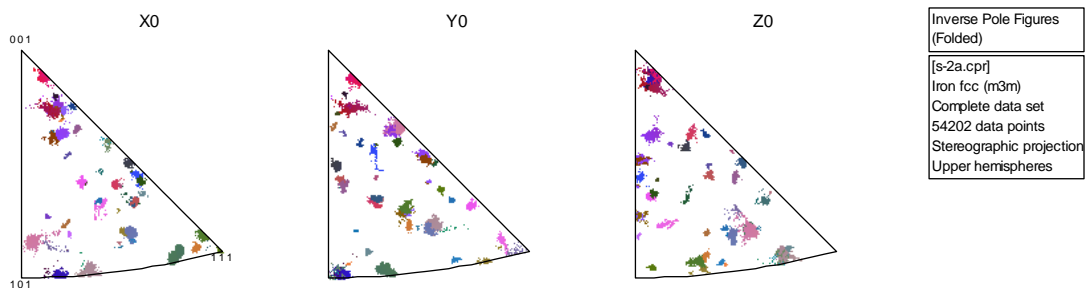


EULER IMAGE OF CYCLICALLY DEFORMED AUSTENITIC STAINLES STEEL

AISI 304LN: C 0.03, Mn 1.78, Si 0.65, S 0.02, P 0.034, Ni 8.17, Cr 18.73, Mo 0.26, Cu 0.29, N 0.08 and the balance Fe. (wt %)



INVERSE POLE FIGURE



Loading Direction and EBSD was one on the top surface

